

Drawing



Hendi B.V.
Steenoven 21
3911 TX Rhenen
The Netherlands

Batch #

300610 and up

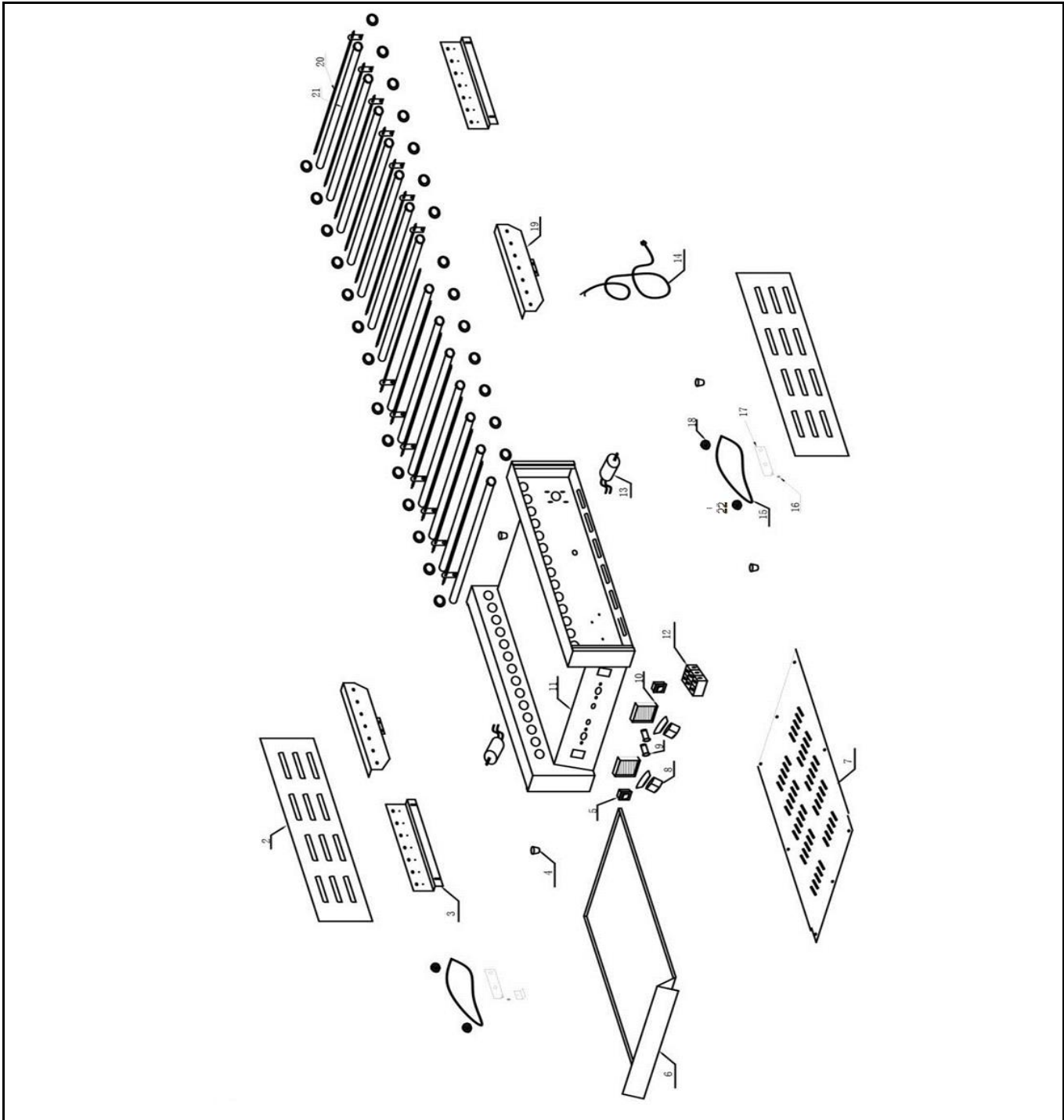
Appliance part#

268735


Description

Sausage rolling grill 14 rollers

Date	01-07-2015	Revision #	Revision version
Revision	First bill of materials (BOM)		



Bill of materials (BOM)

 <p>HENDI FOOD SERVICE EQUIPMENT</p> <p>Hendi B.V. Steenoven 21 3911 TX Rhenen The Netherlands</p>	Batch #	Appliance part#
	300610 and up	268735
	Description	
	Sausage rolling grill 14 rollers	


Date	01-07-2015	Revision #	Revision version
Revision	First bill of materials (BOM)		

Item	Description	Part#	Quantity	Remark	Picture
1	Ring for tube	932315	28		
2	Side cover	n/a	2		
3	Bracket element (left)	n/a	1		
4	Feet	932322	4		
5	Switch	205426	2		
6	Crumb tray	932360	1		
7	Bottom cover	n/a	1		
8	Knob "Hendi branding"	932377	2		
9	Indicator light	912003	2		
10	Energy regulator	201121	2		
11	Frame	n/a	1		
12	Terminal	n/a	1		
13	Motor	932285	2		
14	Power cord	930038	1		
15	Drive chain	932414	2		
16	Tension spring	932421	2		
17	Clamping plate	932438	2		
18	Gear for motor	932445	2		
19	Bracket element (right)	n/a	1		
20	Element	932452	14		
21	Rol	932469	14		
22	Gear for clamping plate	932476	2		

n/a -> not available

nss -> not sold separately

Circuit diagram

 <p>Hendi B.V. Steenoven 21 3911 TX Rhenen The Netherlands</p>	Batch #	Appliance part#
	300610 and up	268735
	Description	
	Sausage rolling grill 14 rollers	

Date	01-07-2015	Revision #	Revision version
Revision	First bill of materials (BOM)		

